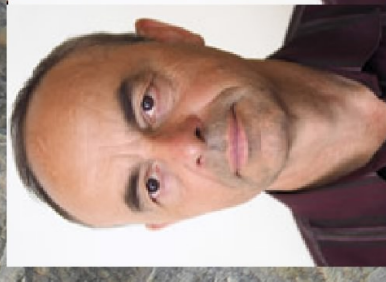


Invertebrate trace fossils: record of life and palaeoenvironment.



Traces of life activity of organisms in sedimentary rocks, always preserved in situ, record several palaeoenvironmental parameters. They also influence rocks fabric and change their properties. Several examples from Italy, including Liguria will be presented.

aula 301
Mercoledì 17 Ottobre
ore 16.



Prof. Alfred Uchman
Jagiellonian University,
Kraków, Poland